

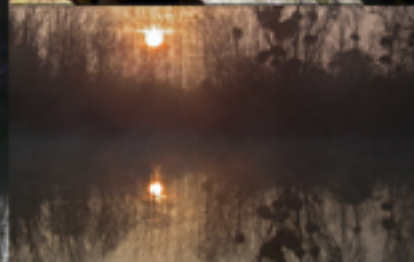
# Croix Blanche

Carp Fishing Lakes in France



2013

Lake Size	Two Lakes of 6 & 8 acres
Swims	15 numbered swims
Depth	2m to 5m
Carp Stocks	Good head of carp in both lakes to over 50lb. Average around 20lb+.
Catfish Stocks	Catfish to well over 100lb. A good number or 30's,40's and 50's. Current lake record is 107lb.
Other fish	Grass carp to 40lb+, specimen crucian carp, tench, pike, bream.
Lake Bed Features	Firm gravel and chalk, some weed. Margin over hangs, bars, deep gullies
Access	Most pegs accessible by car
Night Fishing	Yes
Boats allowed	Bait boats and rowing. boats are allowed. Use responsibly
From Ferry	150 miles or 2.5 hours
English spoken	Yes



## Prices 2013

- Angler Price per week: 320,00 €
- Non Angler Price per Week: 55,00 €
- Exclusive Price per Lake: 1600,00 €  
(either CroixBlanche or Tortue lakes)
- Accommodation per Week: 275,00 €

[www.croixblanchelakes.com](http://www.croixblanchelakes.com)

*Carp Fishing Holidays in France*

Tel: 00 33 670 900 433

# The Lakes

The Croix Blanche lakes are set in northern France covering around 17 acres. The venue is just 2.5 hours from Calais and only 100 kilometres from the Belgian border. The complex consists of 2 beautifully matured & established carp fishing lakes renowned for their big fish.

- CROIX BLANCHE LAKE - 6 Acres - 7 Swims - Max 5 anglers
- TORTUE LAKE - 8 Acres - 8 Swims - Max 5 anglers
- STOCK LAKE - 1 Acre (No fishing allowed)

The banks have purpose built swims with trees around the margins. Weed presence can fluctuate from year to year, but it's not a problem. There are no obvious underwater obstacles or snags.



The number of pegs as been kept to a minimum: the Croix Blanche has seven, with eight pitches on the Tortue. Most of these pegs are cut back into the bank to provide comfortable pitches. Access to the pegs is excellent with a track around the whole property, and access to most of the pegs is possible by car.

The property is entirely closed with a secure fence around the whole perimeter.

## The Croix Blanche Lake

The Croix Blanche lake is the first lake you come to on arrival at the venue. It comprises of 7 swims and is the closest to the facilities and accommodation. There is a maximum of 5 anglers at any one time (six are allowed for an exclusive lake booking).



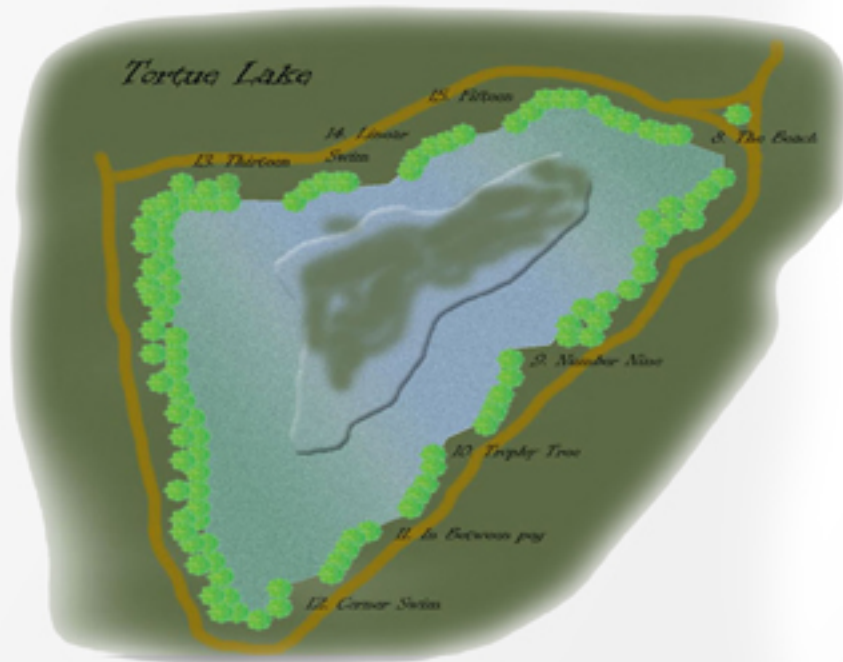
Custom build pegs have been constructed for each swim, providing dug outs and steps to the water to accommodate the varying water levels at the various times of the year, and each swim has plenty of room to install bivvies and rods.

The lake has been stocked regularly since I have owned the venue, the latest stocking having taken place in June 2010, when 50 carp were introduced ranging from 18lb to 26lb. This takes the stock to between 150 & 200 carp, the largest in 2011 being a 57lb mirror. The lake also saw a 42lb common banked. The average size now being in the mid twenties, with a number of thirties also present. Aside from the large carp the lake also has a good head of catfish, that range from doubles to over 70lb.

Average depth in the summer is around 4 to 6 feet with deeper holes at the top end and in front of peg 2. There is a fair amount of weed in the central part of the lake, which is often an place the fish use as a holding area. The best tactic is usually to present a bait in the holes in the weed or close to the far margins.

There is a track all the way around the perimeter that gives access by car to all swims.

## The Tortue Lake

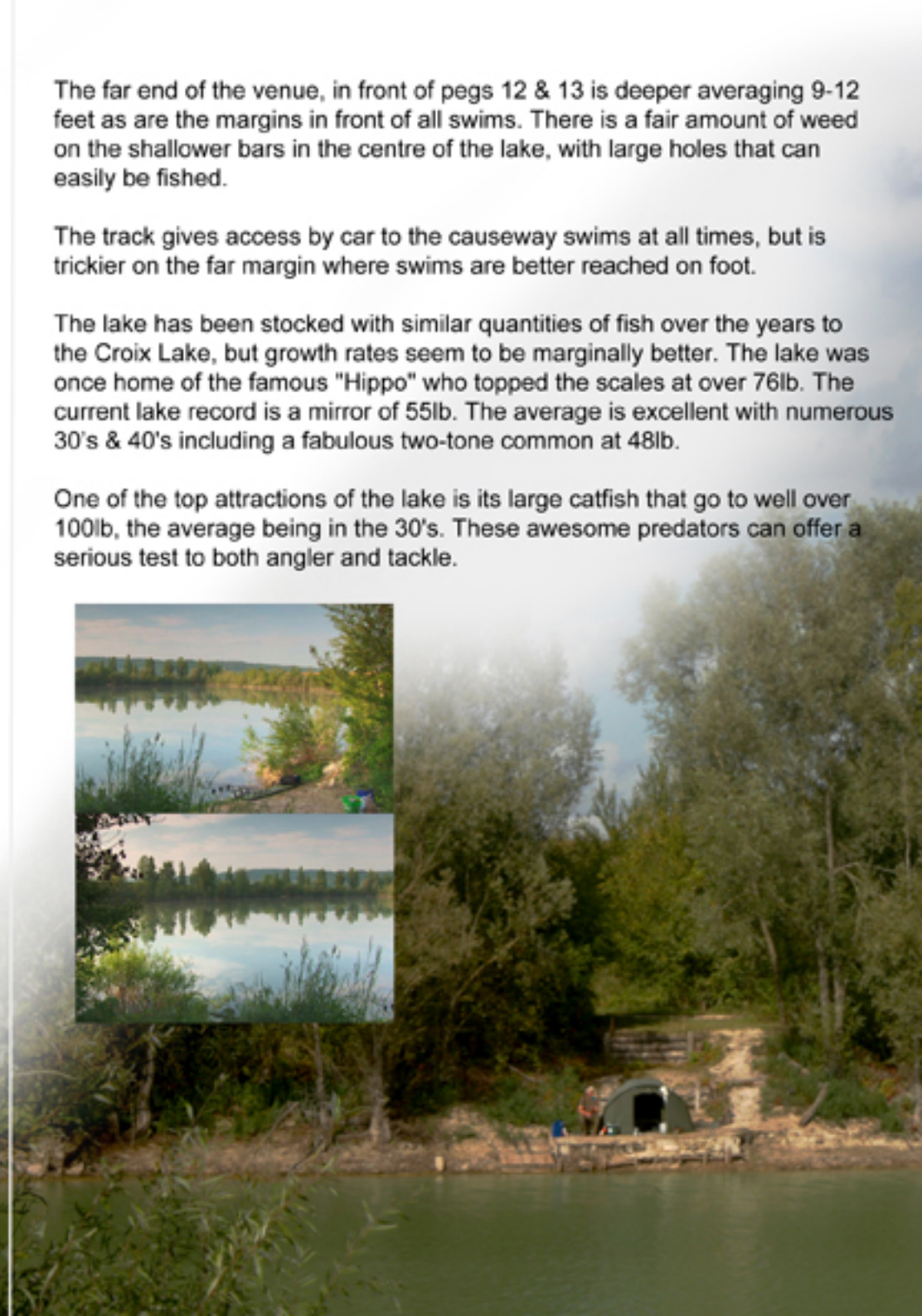


The far end of the venue, in front of pegs 12 & 13 is deeper averaging 9-12 feet as are the margins in front of all swims. There is a fair amount of weed on the shallower bars in the centre of the lake, with large holes that can easily be fished.

The track gives access by car to the causeway swims at all times, but is trickier on the far margin where swims are better reached on foot.

The lake has been stocked with similar quantities of fish over the years to the Croix Lake, but growth rates seem to be marginally better. The lake was once home of the famous "Hippo" who topped the scales at over 76lb. The current lake record is a mirror of 55lb. The average is excellent with numerous 30's & 40's including a fabulous two-tone common at 48lb.

One of the top attractions of the lake is its large catfish that go to well over 100lb, the average being in the 30's. These awesome predators can offer a serious test to both angler and tackle.



# The Fish

## Carp

The initial stocking of carp into the lake was carried out by the original owner in the early 1990s and consisted of 250 two to three -year-old carp. By the time I purchased the pits with a view to transforming them into a carp fishery in 1999, the largest of these carp had topped 44lb, with an estimated 60 fish remaining from this first stocking.

Between 1999 and 2008 a large number of carp were stocked into both of the lakes as part of a progressive fish management programme on the venue.

Each lake now has around 120-150 carp to over 50lb. Other species include the Wels catfish to over 100lb, grass carp to 40lb plus, tench, bream, crucian carp, roach, rudd, pike and perch. The stocking policy for the future is to continue to introduce fish over 20lb progressively to the lakes.



## Catfish

The venue has a really good head of catfish to over 100lb. The current record stands at 109lb.

These hard fighting fish give a really good account of themselves and can be handled on regular carp gear as long as you use a heavy braided hook-link, Dyneema for example. We generally use a reinforced braided link of around 80lb.

The favoured method is to use Halibut pellets, but live baits work well too. A large number also get caught on boilies.

The catfish are really very voracious predators and very powerful fish. Even a 30lb cat will give a far harder fight than a carp of a similar weight.

## Other Species

It is little known but the lakes contain a large head of pike and some really big ones, the lake record is over 40lb. So if you enjoy a bit of piking don't forget your lures and pike rigs.

Despite the fact that I set the venue up as a carp and catfish fishery, the previous owners had stocked numbers of pike as these fish are the preferred quarry of most local fishermen. These fish then have seen virtually no pressure in the 10 years since I have owned the place.

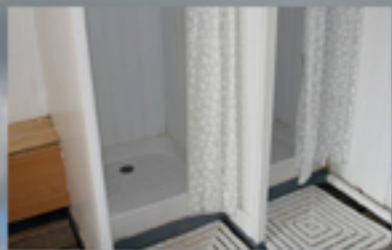


# The Facilities

## Shower Block

The facilities on the water are very good. At the entrance to the venue there is a shower and English style toilet block with two hot showers and two toilets. The block consists of:

- Two hot showers.
- A stainless steel wash basin.
- Bench seating so you can get changed easily and comfortably.
- There is a toilet inside the block as well as a separate one outside so you don't have to wait your turn if the shower is occupied.



## Accommodation:

There is a first class mobile home on site that is available to visitors. It consists of :

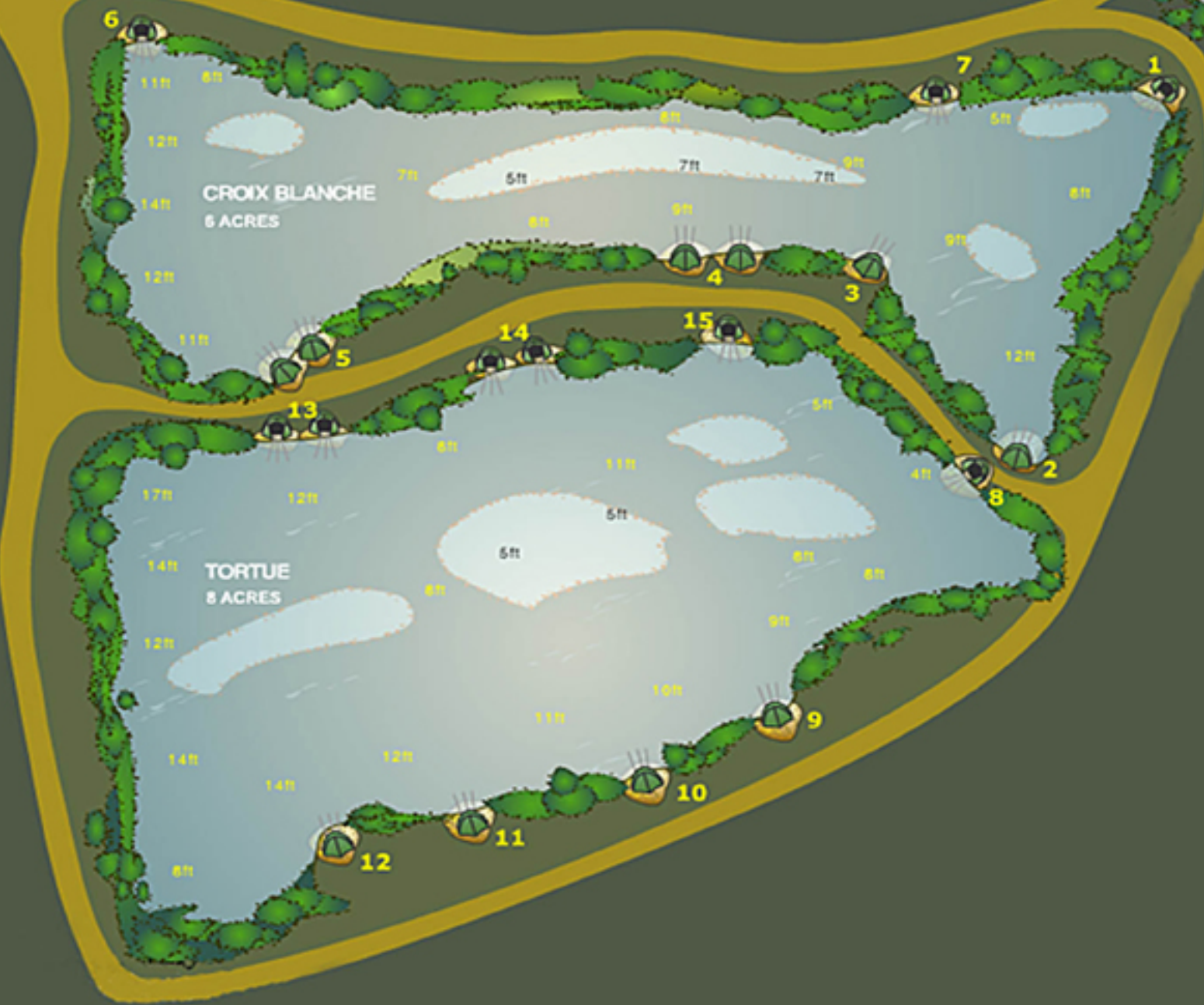
- A lounge area with French digital TV channels & DVD player.
- A bathroom and shower
- A separate toilet,
- A fitted kitchen, with all the utensils you'll need including gas hob, oven, microwave, fridge etc.
- Two bedrooms, both with brand new beds, that can sleep three people (one double room and one single). Bedding is provided
- The sofa in the living area is also convertible to allow a further sleeping area.
- A deposit of 150€ will be required on arrival. This is returned if the mobile home is left in a tidy state and the cleaning undertaken.



Toilets & Showers  
Mobile Home

Bins & Bottles

Tackle Shop and kitchen.  
Dining Area



*Etangs de la Croix Blanche*